



NIBIO

NORWEGIAN INSTITUTE OF
BIOECONOMY RESEARCH

Mapping and comparison of harvesting production management in Norwegian forest owners associations

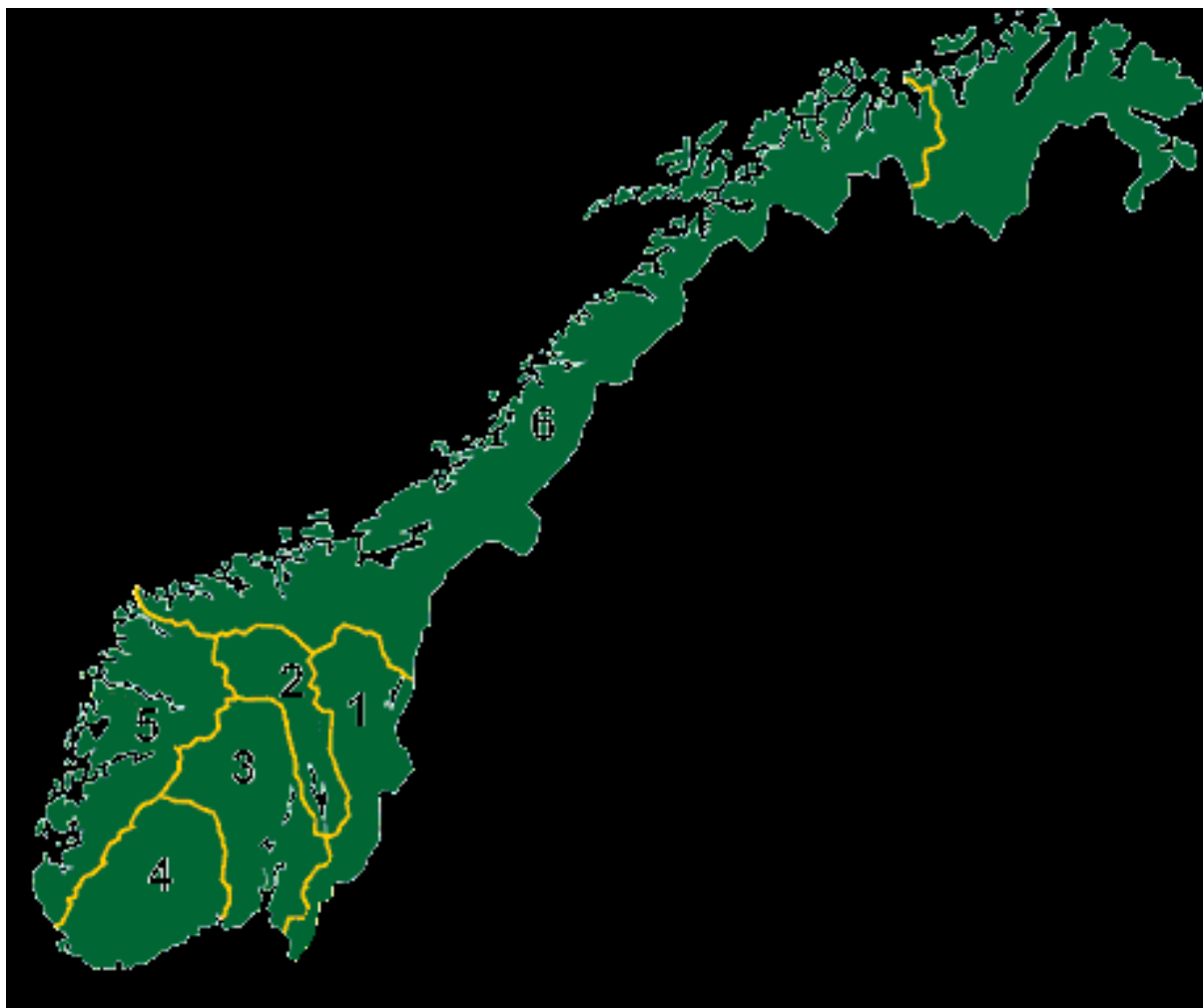
Eva Skagestad – Norwegian Forestry Extension Services

Birger Vennesland & Dag Fjeld – Norwegian Institute of
Bioeconomy Research

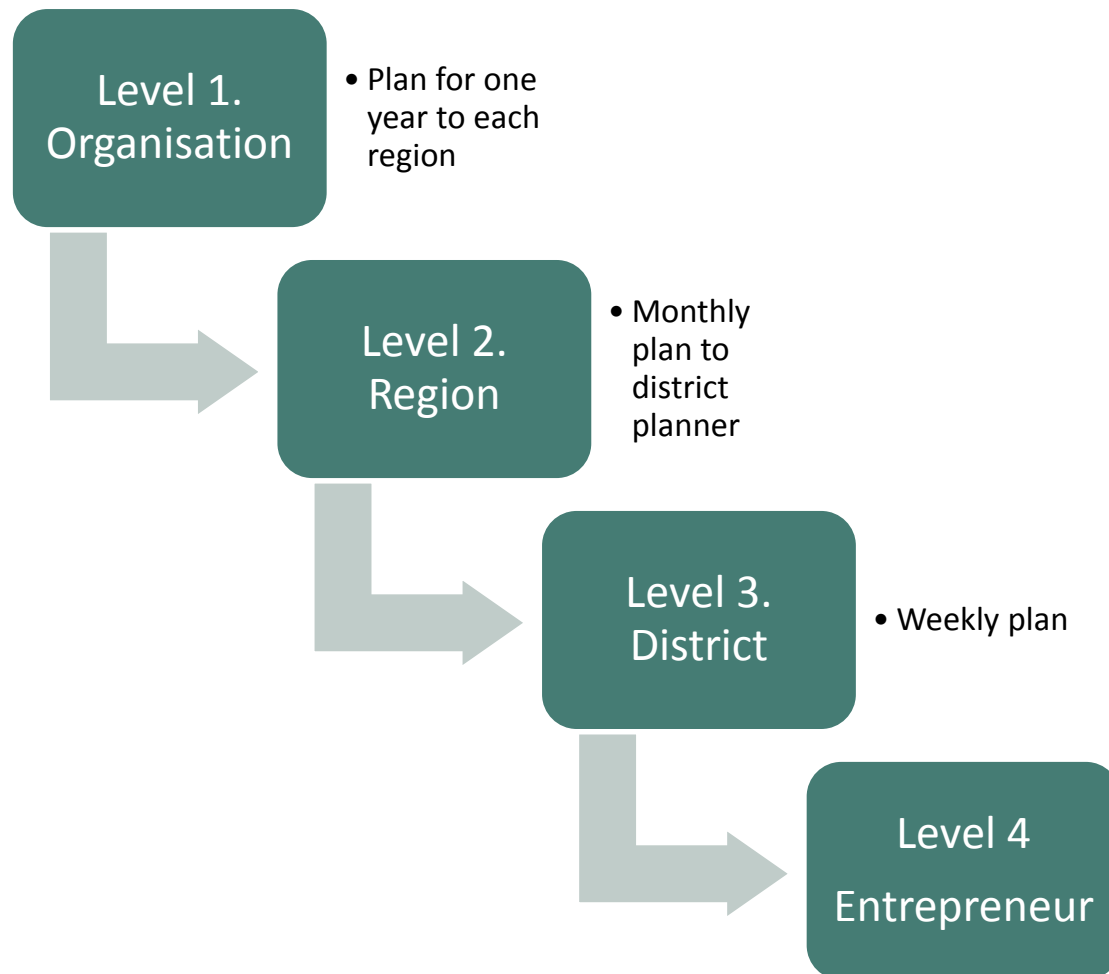
Aim and design

- Potential improvements in harvesting production management for Norwegian Forest owner associations.
- Production management routines were captured using business process mapping methodology
 - Data collected using virtual walk-through approach

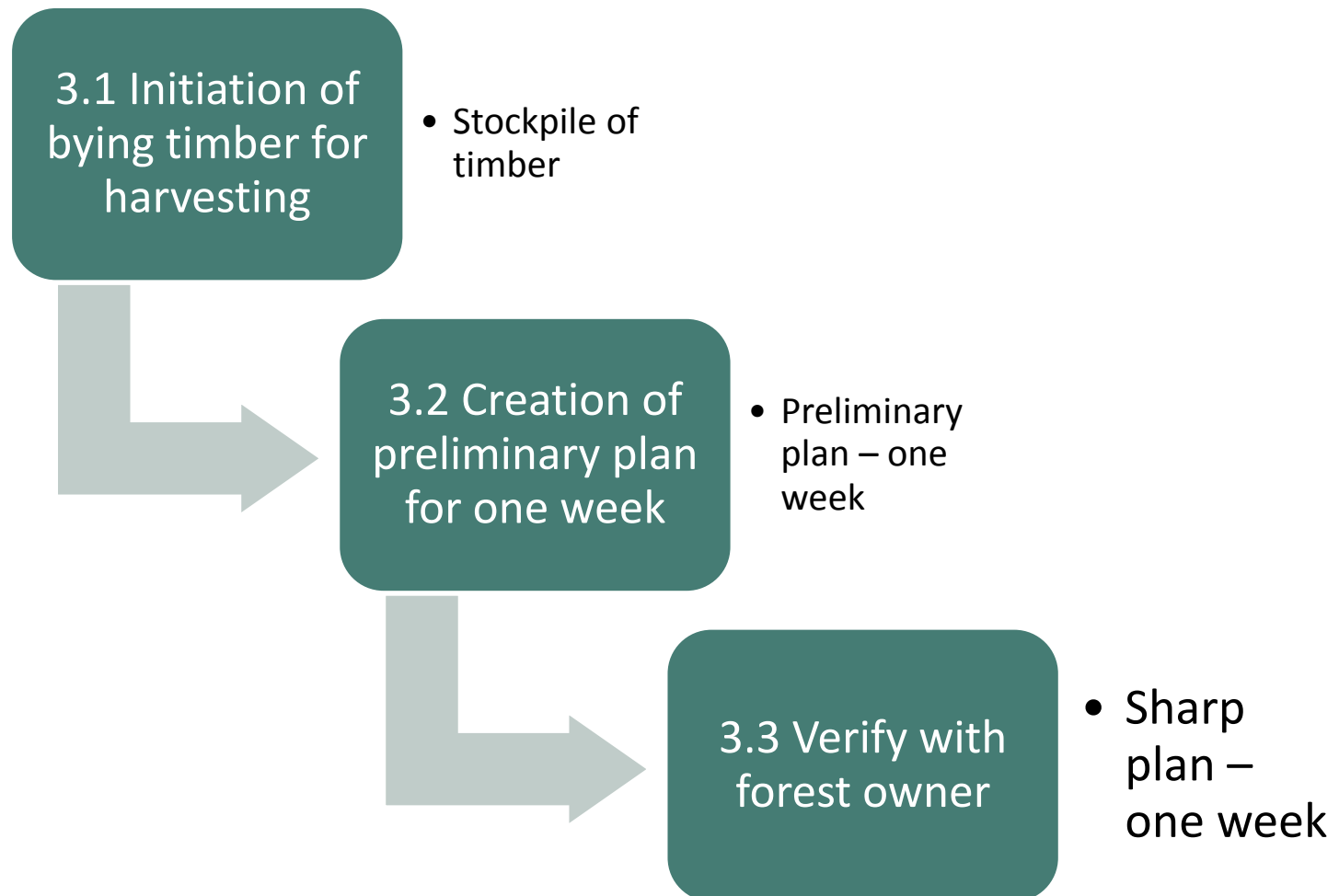
Forest owner associations in Norway at National and regional level



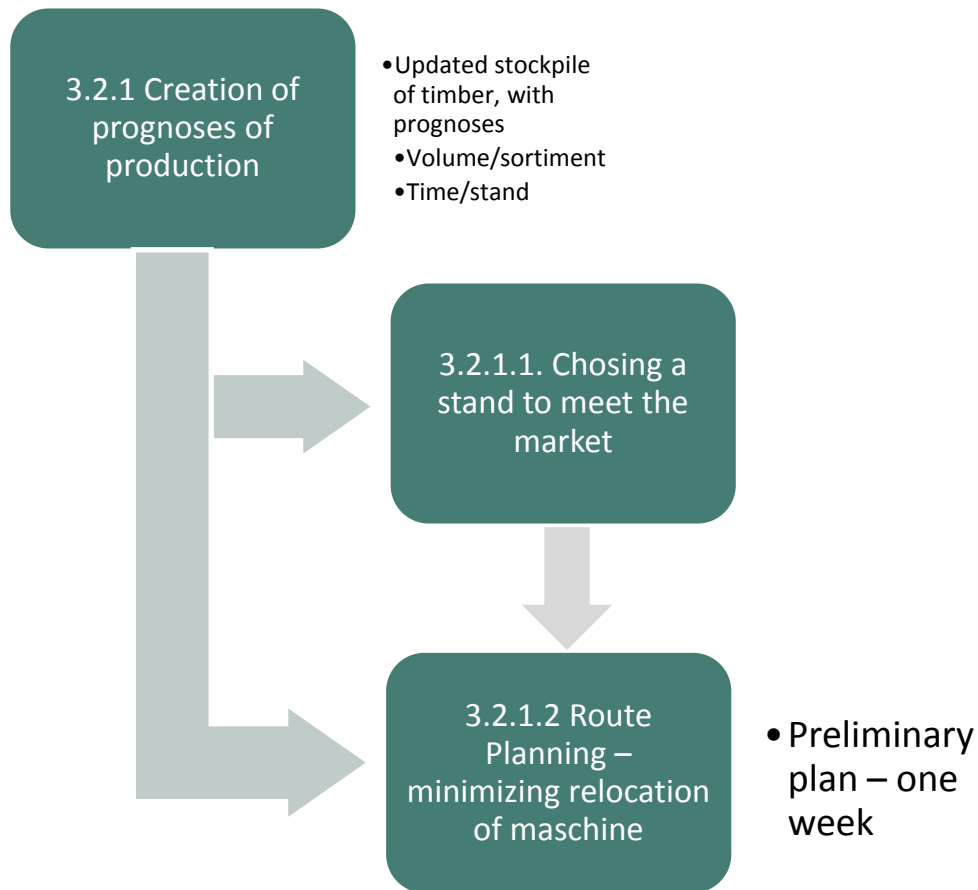
Four Activity Levels



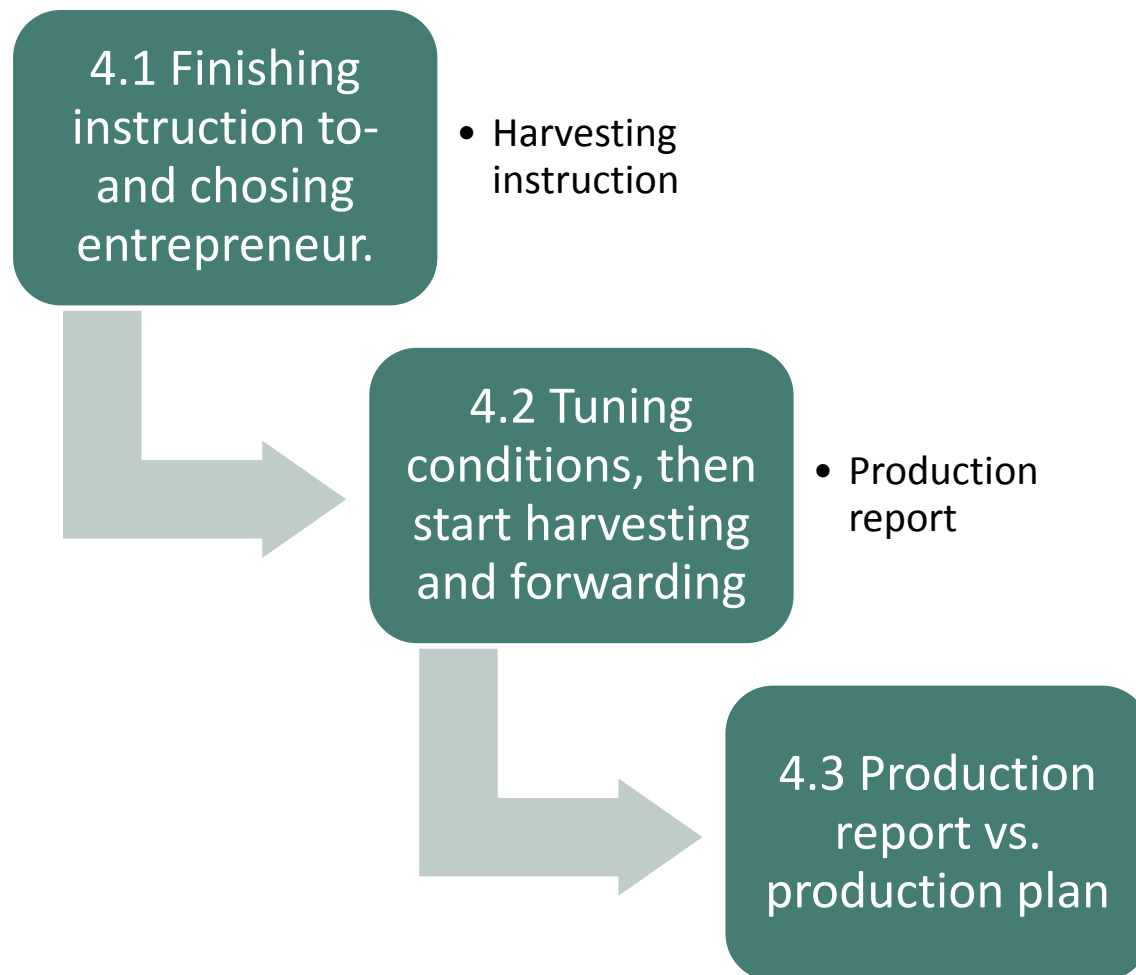
Level 3: Production planning



Level 3.2 Creation of preliminary plan for one week



Level 4: Start- and follow up on harvesting/forwarding



Conclusion

- Production management vary between context
- Three sub-processes
 - A: Overall planning within the forest owner association
 - B: Operational scheduling of harvesting
 - C: Production follow-up
- Multiple re-planning loops are found within sub-processes B and C