

EU Forest Strategy – implications for forest utilization at operational level in Poland

Jarosław Oktaba

Piotr Paschalis-Jakubowicz

Dariusz Zastocki

Jarosław Sadowski

Grzegorz Jednoralskie



Brussels, 20.9.2013
COM(2013) 659 final

COMMUNICATION FROM THE COMMISSION TO THE EUROPEAN
PARLIAMENT, THE COUNCIL, THE EUROPEAN ECONOMIC AND SOCIAL
COMMITTEE AND THE COMMITTEE OF THE REGIONS

A new EU Forest Strategy: for forests and the forest-based sector

Guiding principle

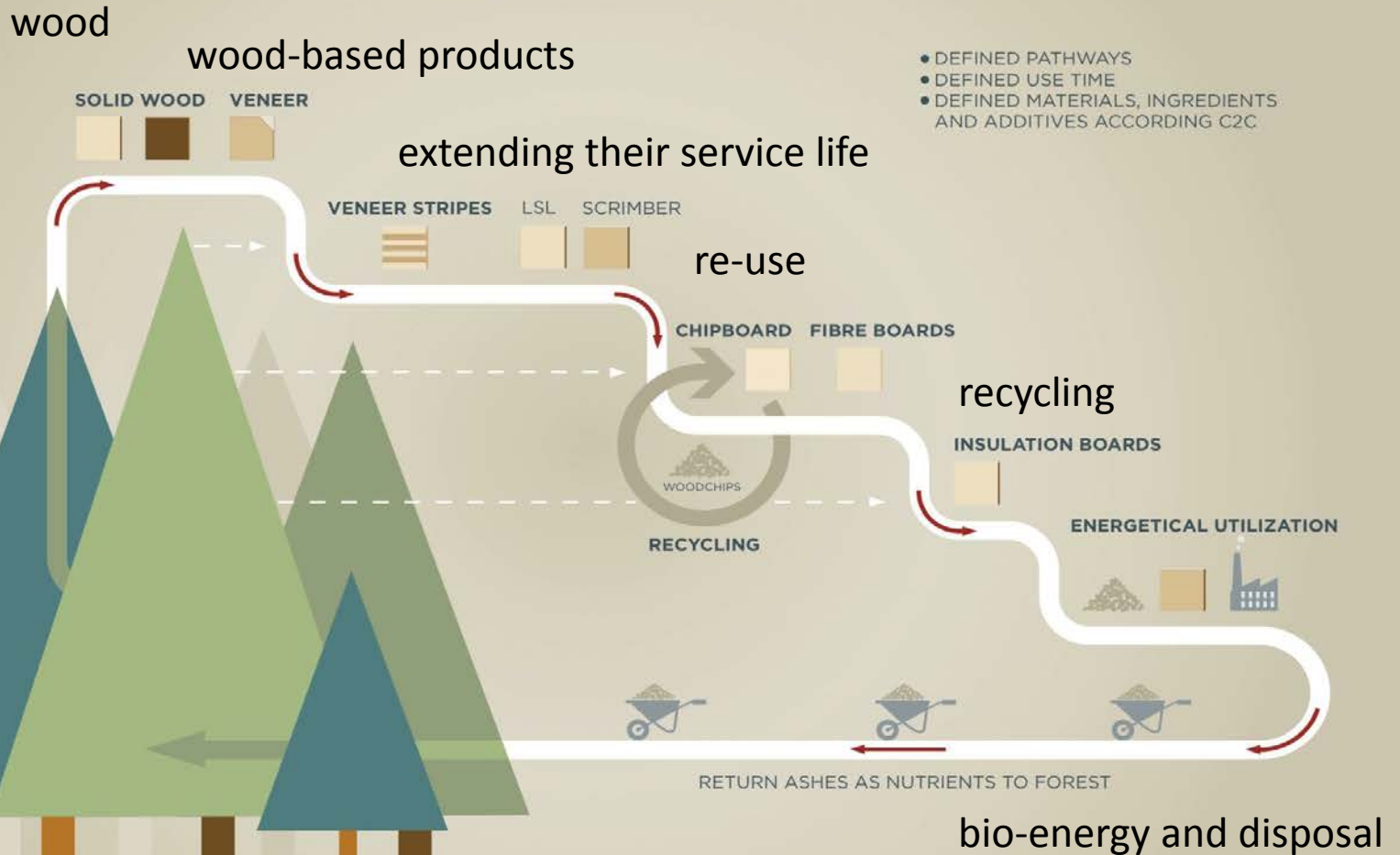
Sustainable forest management and the multifunctional role of forests, delivering **multiple goods** and services in a **balanced** way and ensuring forest protection;

Resource efficiency, optimising the contribution of forests and the forest sector to rural development, growth and job creation

Global forest responsibility, promoting sustainable production and consumption of forest products

cascade principle

WOOD CASCADE ACCORDING TO CRADLE TO CRADLE



Aeraes of priority

Supporting our rural and urban communities

Fostering the competitiveness and sustainability of the EU's Forest-based Industries, bio-energy and the wider green economy

Forests in a changing climate

Protecting forests and enhancing ecosystem services

What forests do we have and how are they changing?

New and innovative forestry and added-value products

Working together to coherently manage and better understand our forests

Forests from a global perspective

Supporting our rural and urban communities

prioritise investments in:

modernising forestry technologies;

optimising the sector's contribution to the bio-economy;

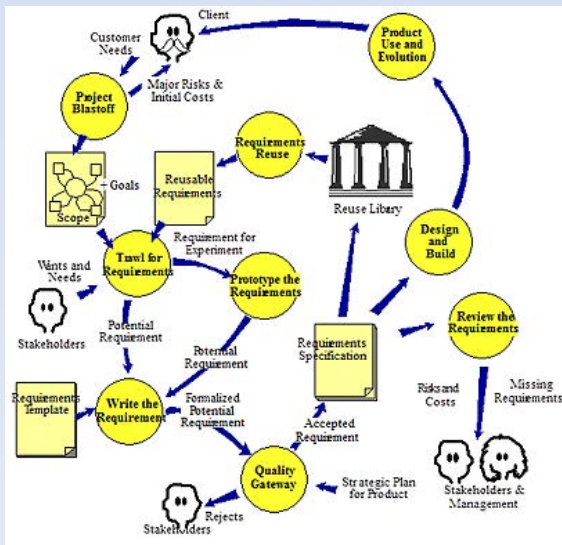
improving the resilience, environmental value and mitigation potential of forest ecosystems achieving nature and biodiversity objectives;

adapting to climate change;

conserving genetic resources;

forest protection and information;

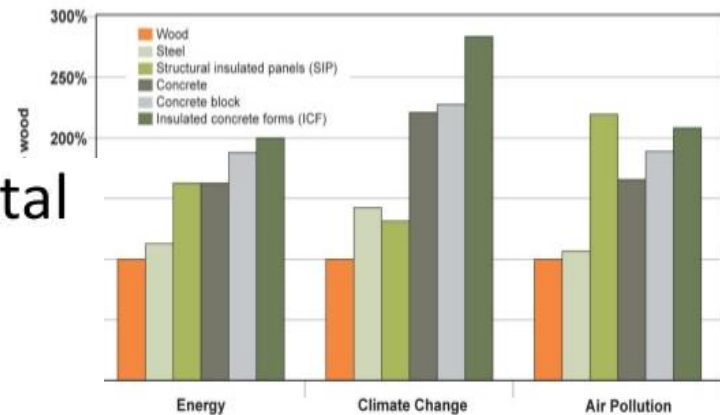
creating new wood and agro-forestry systems



Fostering the competitiveness and sustainability of the EU's Forest-based Industries, bio-energy and the wider green economy

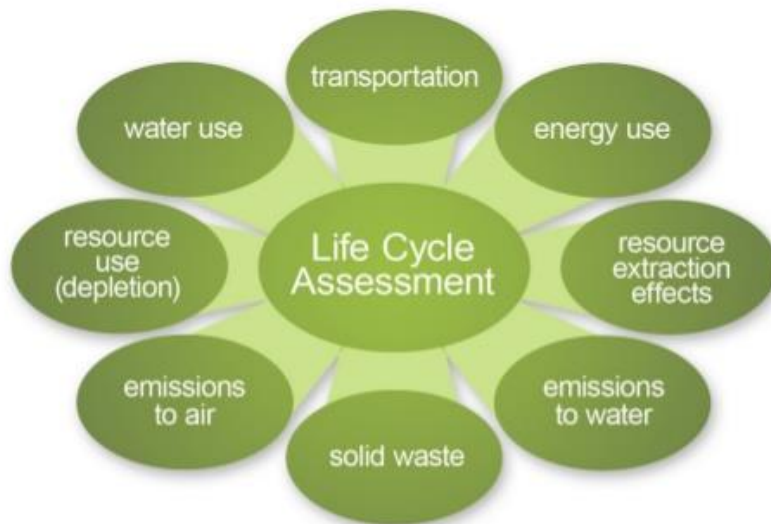
Forests in a changing climate

Life cycle assessment shows wood is a good choice <http://www.pfla.bc.ca/>



Embodied environmental impacts of various exterior wall assemblies

Understanding the full environmental impact





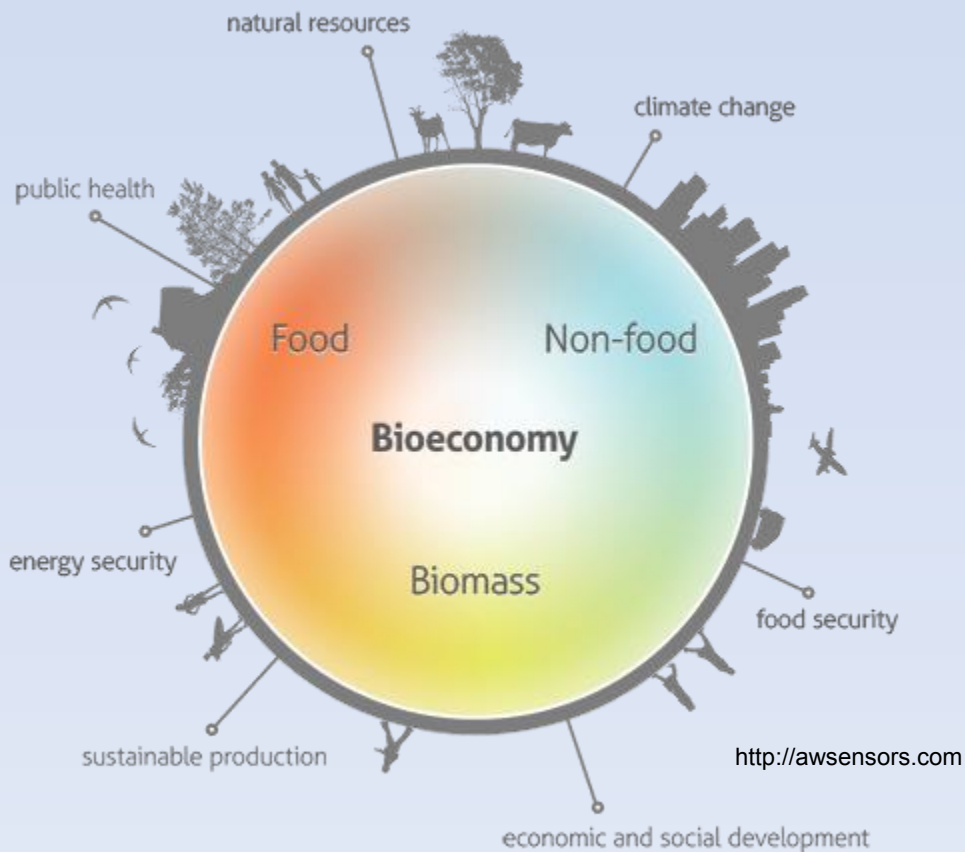
Brussels, 13.2.2012
COM(2012) 60 final

COMMUNICATION FROM THE COMMISSION TO THE EUROPEAN
PARLIAMENT, THE COUNCIL, THE EUROPEAN ECONOMIC AND SOCIAL
COMMITTEE AND THE COMMITTEE OF THE REGIONS

Innovating for Sustainable Growth: A Bioeconomy for Europe

The aims

The Bioeconomy Strategy and its Action Plan aim to pave the way to a more innovative, resource efficient and competitive society that reconciles food security with the sustainable use of renewable resources for industrial purposes, while ensuring environmental protection



THE BIOECONOMY ACTION PLAN

2. Increase the share of multi-disciplinary and cross-sectoral research and innovation in order to address the complexity and inter-connectedness of societal challenges by improving the existing knowledge-base and **developing new technologies**. Provide scientific advice for informed policy decisions on benefits and trade-offs of bioeconomy solutions.

9. Provide the knowledge-base for sustainable intensification of primary production. Improve the understanding of current, potential and future availability and demand of biomass (including agricultural and forestry residues and waste) across sectors, taking into account added value, sustainability, soil fertility and climate mitigation potential. Make these findings available for the development and review of relevant policies. **Support the future development of an agreed methodology for the calculation of environmental footprints, e.g. using life cycle assessments (LCAs).**

Conclusions

Forest Policy of the European Union points to the need for greater recognition of the paradigm of sustainable development in the functioning of the forestry and timber sector.

Encouraged to work on a comprehensive assessment of machinery and technologies used in forestry from the point of view of employment and the impact on the natural and social environment at join - Forestry and FBI

Note: The FBI at this context means – **F**orest **B**ased **I**ndustry

Effects in Poland

Certification of forest operation is a permanent part of forestry

Put into effect new method of contracting services

We have started works on the inclusion of forestry in to emissions trading

...and challenges

Scientific base for choose the BAT

Lack of LCA analysis for different technology of harvesting

Poor base for describing multifunctional utilization of forest and balance between functions - within the area of quantification effects

We are still financially depending only from wood

Sustainable procurement

Thank you for your patience

