

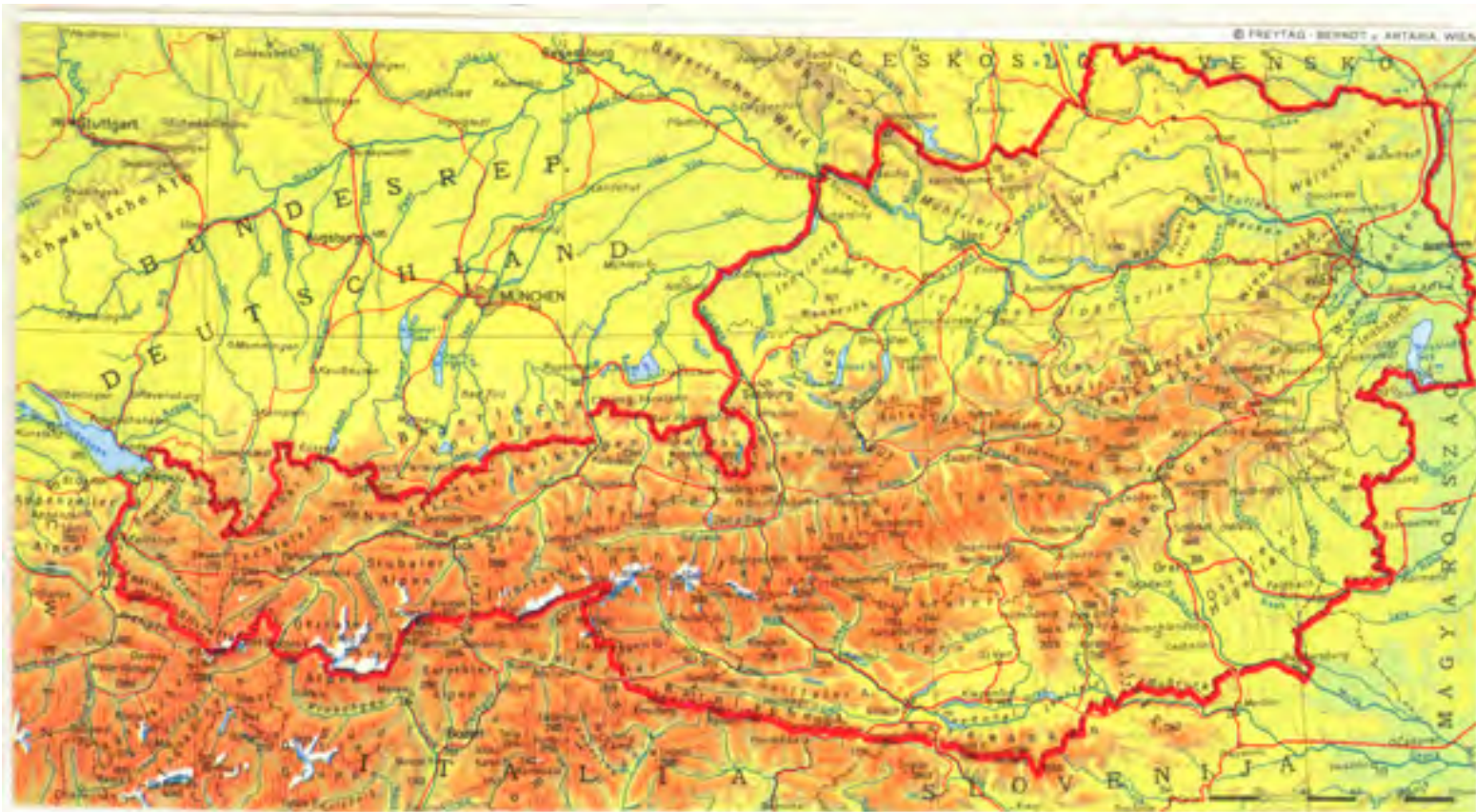
28|02|2011

AUSTRIAN FEDERAL FORESTS

Formec 2011 | Graz | Erwin Stampfer

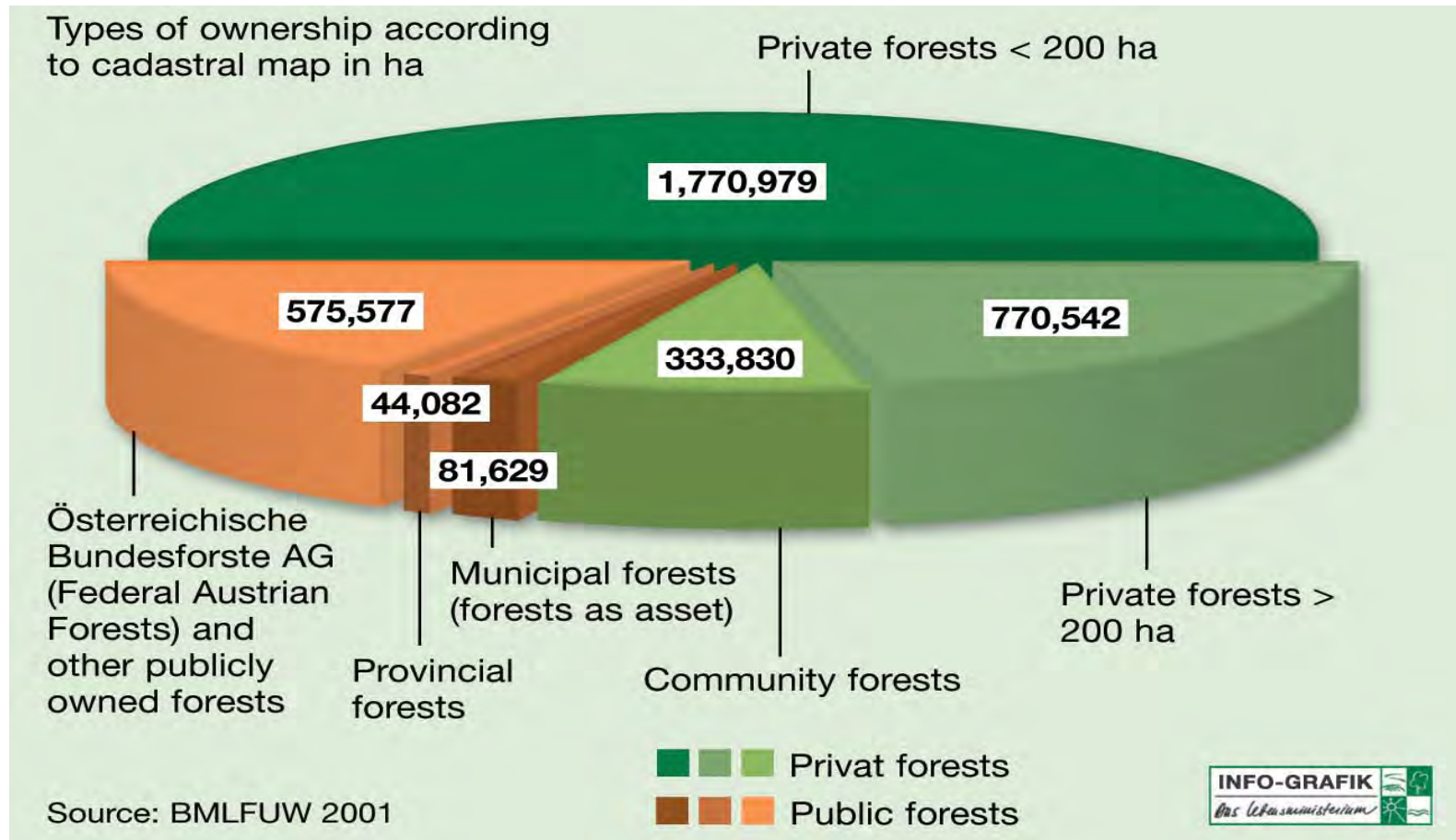


TOPOGRAPHY



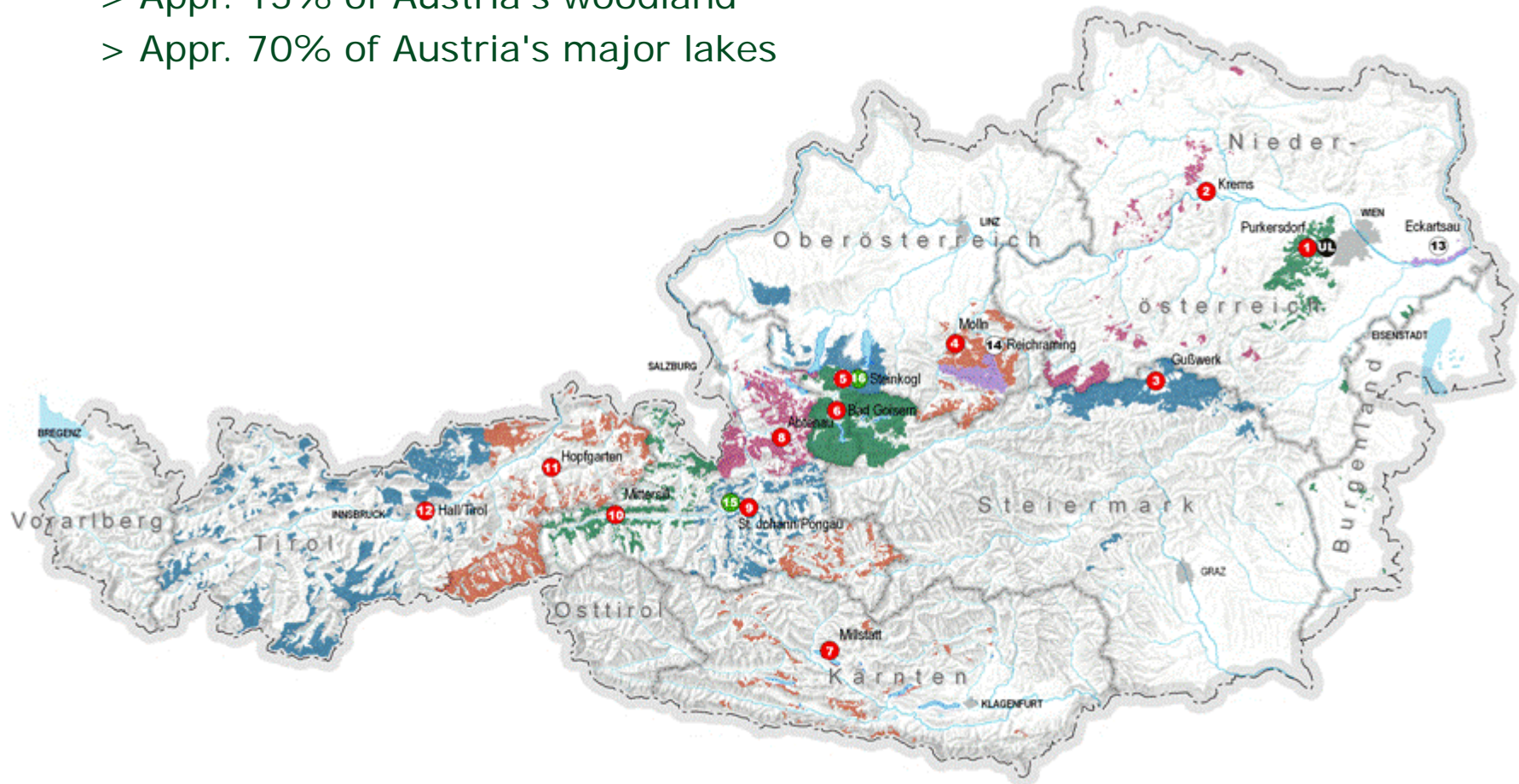
THE AUSTRIAN FEDERAL FORESTS

Ownership categories (Forests in Austria)



OUR AREAS – FROM WEST TO EAST

- > Appr. 10% of national territory
- > Appr. 15% of Austria's woodland
- > Appr. 70% of Austria's major lakes



AUSTRIAN FEDERAL FORESTS THE "SUSTAINABILITY COMPANY"

Sustainability means

... a responsible approach to natural resources.

... only extracting as many raw materials as nature can reproduce itself.

... always ensuring a balance between nature, society and economy.

Average age 124 years
Sustainable yield 1,6 Mio. m³ per year

OUR AREAS OF BUSINESS

Sustainability model



THE "AUSTRIAN FEDERAL FORESTRY MODEL"



Owner	100% Republic of Austria
Legal form	Newly established in 1997 as a joint-stock corporation
Budget contribution	> 50% of annual net profit to the Republic of Austria > Annual dividends totalling EUR 280 million since established



Decentralised structure

- > 12 forest management units
- > 2 national park management units
- > **1 forestry technology units**
- > 3 profit centres
- > headquarters

FACTS & FIGURES

Total area	855,270 ha
Woodland	513,600 ha
Managed Forest	350,200 ha
Lakes	More than 70 of the larger lakes
Running waters	2,000 km
Buildings	Appr. 4,200
Total sales revenue	EUR 220 million
Contribution to Federal budget	EUR 27 million
	Dividends EUR 19 million
	Usufruct compensation EUR 8 million
Employees	1,198

As of Dec, 31st 2010

ÖBf FORESTRY TECHNOLOGY UNIT



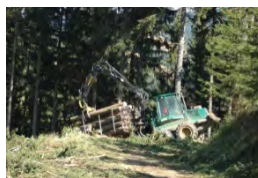
MACHINE CAPACITY



Cabel line system 30



Prozessor 5



Harvester 10



Grapple Skiddder 1

Winch Skidder 35



Forwarder 10

Trailer 2

Flying engineers 5

Truck 25

Excavator 30

Loader 7

Boring machine 10

Hydro hammer 10

Grader 11

Roll 11



➤ staff: 20 employees; app. 250 operators

➤ turnover: 40 Mio. €; 40% private sector

HARVESTING

- **harvesting volume : 1.000.000 Efm**
 - > **Harvester:** - 350.000 Efm
 - > **Skidder:** - 300.000 Efm
 - > **Cable line:** - 350.000 Efm
- We can handle a big volume with different technologies
- It`s possible to react to natural disasters and handle a big volume
- We have professional staff
- We also make the whole supply chain from the forest to the industry



ROAD CONSTRUCTION AND ROAD MAINTENANCE



- 100 km forest road construction per year
- 15,000 km road maintenance

- We are the „biggest player“ in forest road construction in Austria
- Pionieers in forest road construction with excavators
- Know How transfer in naighbour country



RENEWABLE ENERGY

Energy production from natural resources - biomass



- to feed heating stations with biomass - also for Europe's largest biomass power plant in Simmering/Vienna – with a biomass capacity of 650.000 m³ chips per year.

Forest technology unit is

- Biomass contractor with a capacity of 30.000 m³ per year
- Biomass logistic for Simmering (storage, chipping, loading, transportation)



PROJECTS AND ACTIVITIES



Wood ash

ATHOSK 



Thank you for your attention!

FOR FURTHER INFORMATION SEE WWW.BUNDESFORSTE.AT